



HCRMA
HIDALGO COUNTY REGIONAL MOBILITY AUTHORITY

**BOARD OF DIRECTORS MEETING
FOR NOVEMBER 2023**

HCRMA Board of Directors

S. David Deanda, Jr., Chairman

Ezequiel Reyna, Jr., Vice-Chairman

Juan Carlos Del Angel, Secretary/Treasurer

Gabriel Kamel, Director

Frank Pardo, Director

Sergio Saenz, Director

Michael J. Williamson, Director

HCRMA Administrative Staff

Pilar Rodriguez, PE, Executive Director

Ramon Navarro IV, PE, CFM, Chief Constr. Eng.

Celia Gaona, CIA, Chief Auditor/Compliance Ofcr.

Jose Castillo, Chief Financial Ofcr.

**General Engineering Consultant
HDR ENGINEERING, INC.**

www.hcrma.net

Report on HCRMA Development Activities
Chief Construction Engineer – Ramon Navarro IV, PE, CFM



Overview

- ❑ 365 TOLL Project Overview
- ❑ IBTC Project Overview
- ❑ Segment 4 / Section A West Plan
- ❑ Overweight Permit Summary

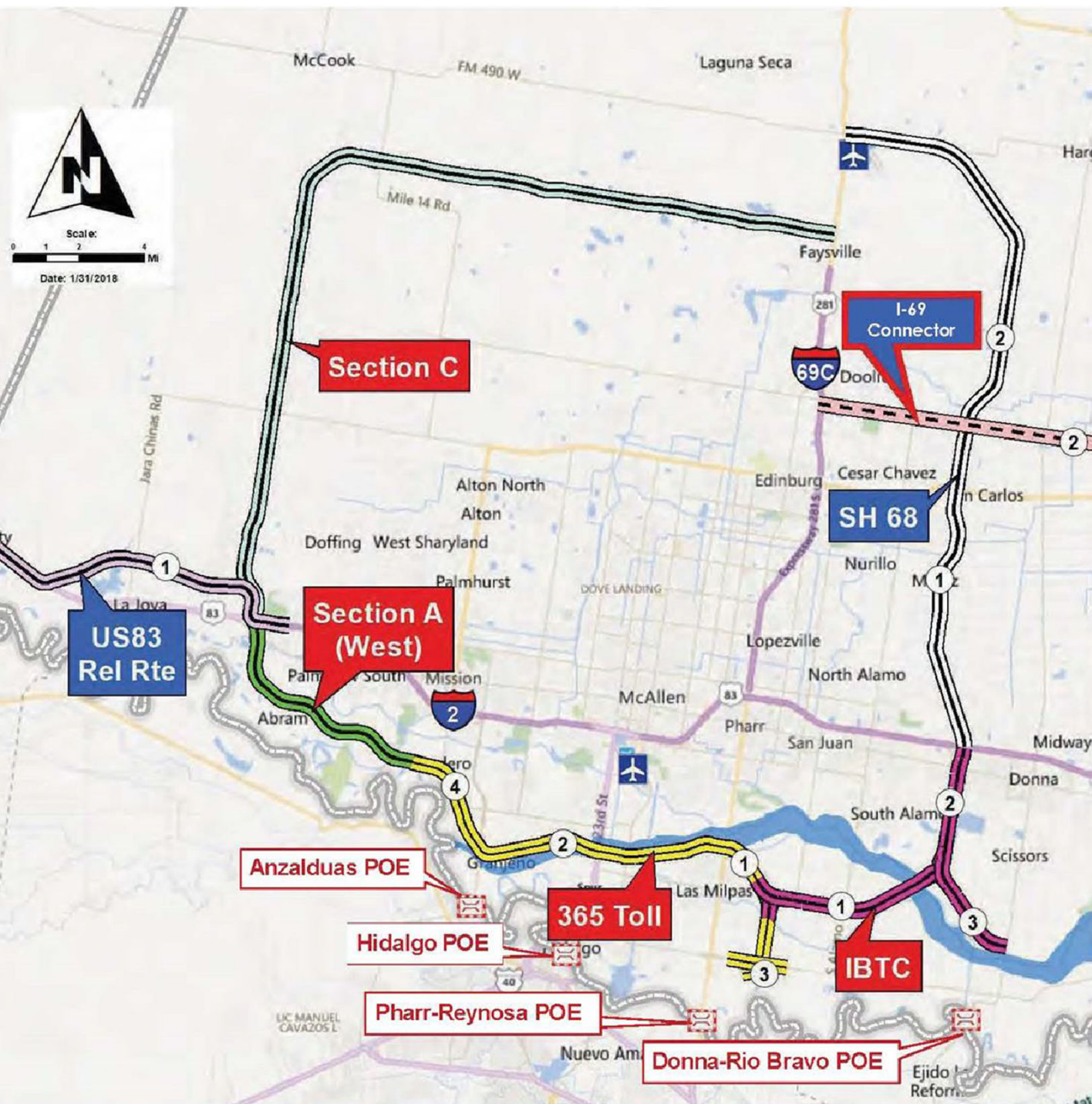
MISSION STATEMENT:

To provide our customers with a rapid and reliable alternative for the safe and efficient movement of people, goods, and services.



HCRMA STRATEGIC PLAN

DEVELOP THE
INFRASTRUCTURE TO
SERVE A POPULATION
OF APPROXIMATELY
800,000 RESIDENTS
AND
5 INTERNATIONAL
PORTS OF ENTRY



Project

-  0010 IBTC
-  0030 365 TOLL
-  0040 Section A West
-  0050 US 83 Relief Route
-  0060 Section C
-  0070 SH 68

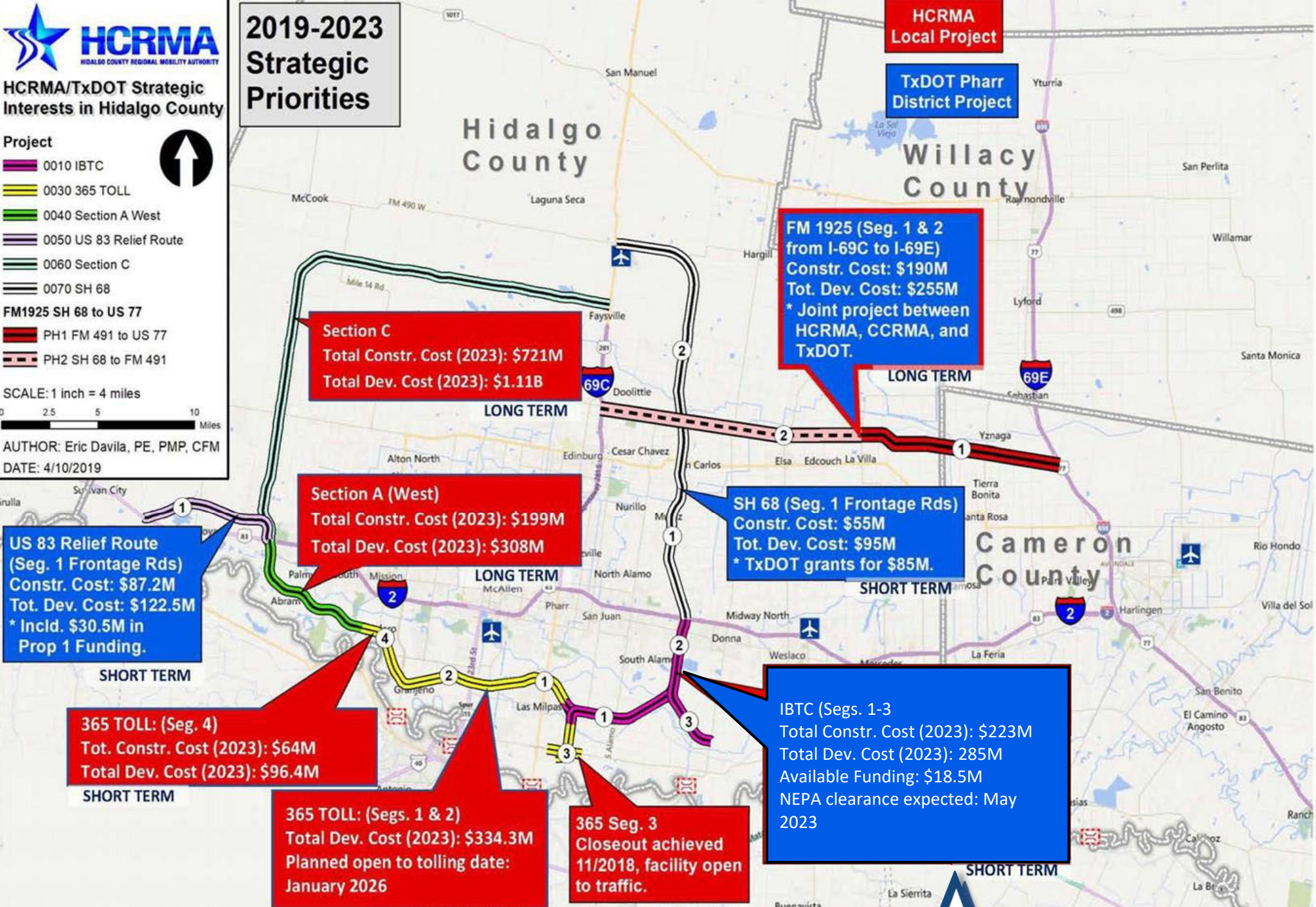
FM1925 SH 68 to US 77

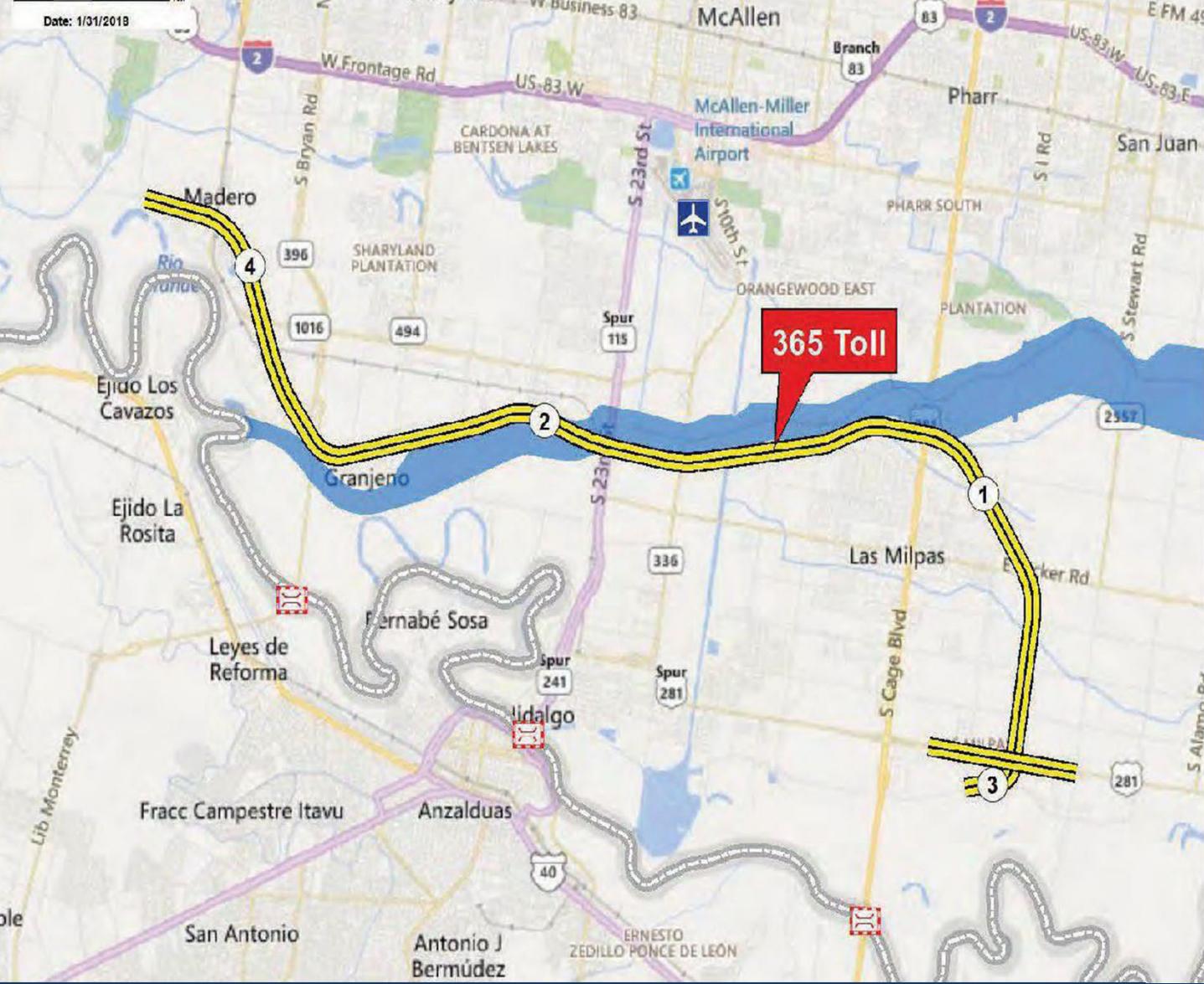
-  PH1 FM 491 to US 77
-  PH2 SH 68 to FM 491

SCALE: 1 inch = 4 miles

AUTHOR: Eric Davila, PE, PMP, CFM
DATE: 4/10/2019

2019-2023 Strategic Priorities





MAJOR MILESTONES:
 NEPA CLEARANCE
 07/03/2015

100% ROW ACQUIRED

PH 1: 365 SEG. 3
 LET: 08/2015
COMPLETED

PH 2: 365 TOLL
SEGS. 1 & 2
LET: 11/2021
OPEN: 01/2026

[SEGS. 1 & 2] LIMITS FROM 0.8 MI. W. FM 396 / ANZ. HWY.
 TO US 281 / BSIF CONNECTOR [365 SEG. 3 COMPLETED]
 [SEG. 4 FUTURE] LIMITS FROM FM 16 / CONWAY
 TO 0.8 MI. W. FM 396 / ANZALDUAS HIGHWAY



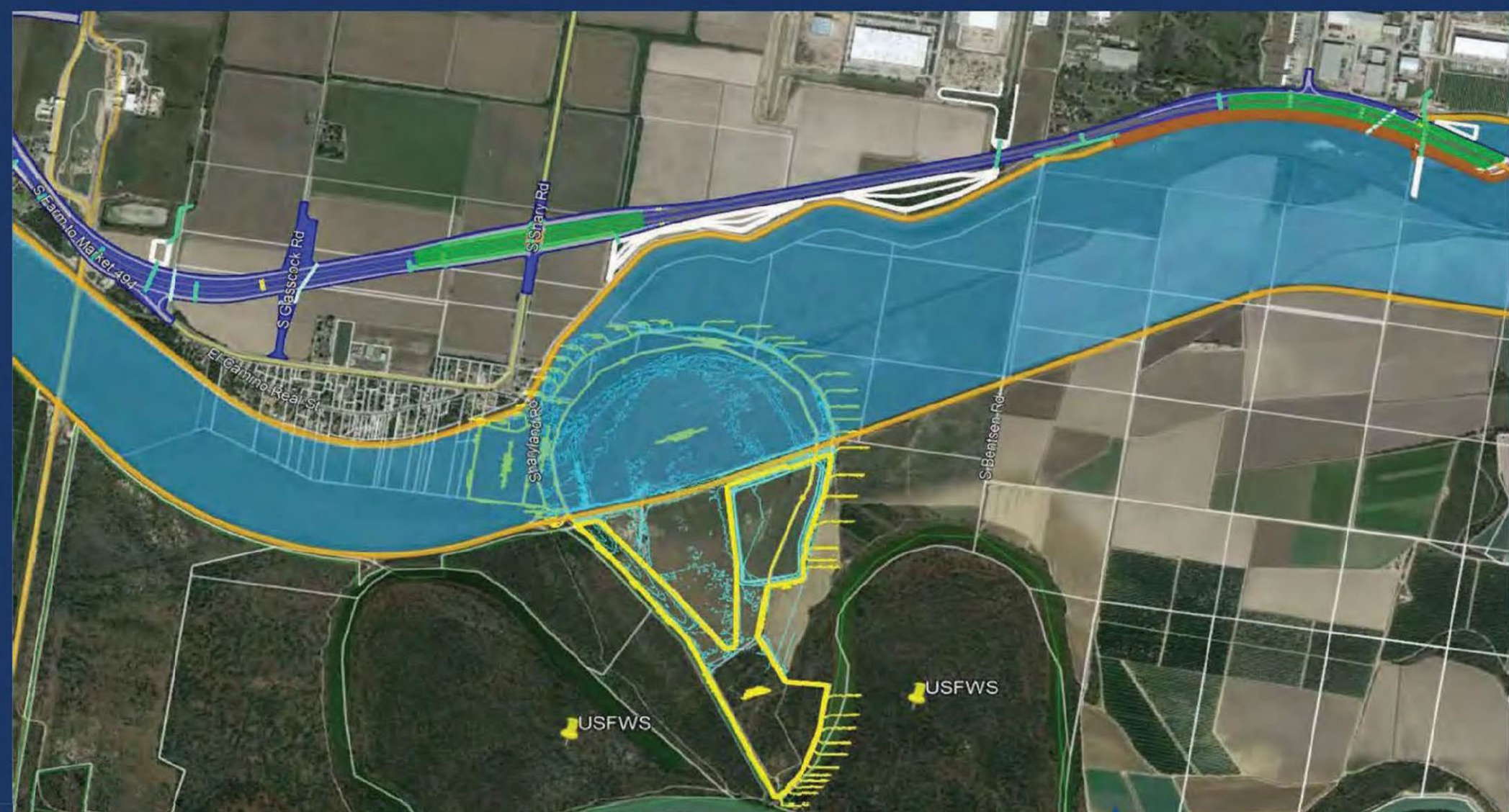


365 TOLLWAY COLLECTION SYSTEM INSTALLATION, INTEGRATION and MAINTENANCE PROJECT

- SEPTEMBER 8, 2022 -Request for Proposals was released
- OCTOBER 3, 2022 -Mandatory Pre-bid meeting was conducted with In-Person or Virtual Attendance option
- DECEMBER 9, 2022 -Five Proposals were received for the 365 Toll Collection System, Integration, and Maintenance Project
- DECEMBER 16, 2022 -Compliance reviews were conducted of all electronic bids;
- FEBRUARY 6, 2023 -Evaluation committee [HCRMA staff and HDR [GEC]] thoroughly reviewed proposals, conducted oral presentations and in accordance with RFP's two-step scoring process
- FEBRUARY 14, 2023 -Proposal bid prices opened, evaluated, scored by evaluation committee
- FEBRUARY 28, 2023 -First Executive
- MARCH 13, 2023 -Second Executive Briefing
- MARCH 14, 2023 -Negotiation of contract terms, condition, & BAFO
- MARCH 28, 2023 -Award of contract to SICE, Inc. for \$13,980,669 with a score of 105



GRANJENO WETLAND MITIGATION SITE



LETTING:

PROJECT DETAILS:

The HCRMA Granjeno Wetland Mitigation Site project is for the restoration of 23.88 acres of land, including approximately 17 acres planned specifically for wetland restoration. The project consists of grading and compaction of approximately 19 acres to establish a wetland which includes the placement of a clay liner and plant root zone soil strata. It also includes berm grading and compaction of approximately 6 acres of upland area. The project includes construction of an access driveway and road including maintenance and brush clearing/trimming. The project includes construction of a groundwater well with controls, approximately 3,000 linear feet of pvc distribution pipe, associated equipment, and a security fence.

Bid opening date & time: Wednesday, December 6, 2023, Until 3:00 P.M. C.S.T.

(MANDATORY) In-person or Virtual Attendance Option.

Pre-Bid Meeting: Tuesday, November 21, 2023, 2 P.M. C.S.T.

All inquiries shall be submitted by 3:00PM CST on Wednesday, November 29, 2023. Inquiries beyond this date will not be responded



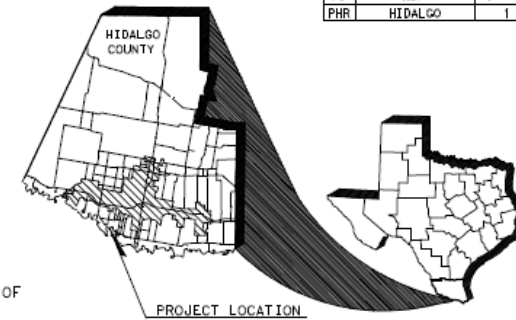
SHEET NO.	DESCRIPTION
1	GENERAL
2	TITLE SHEET
3	PROJECT LAYOUT
4	PROPOSED TYPICAL SECTION
5	GENERAL NOTES
6	ESTIMATE & QUANTITY SHEET
7	SURVEY CONTROL MAP
8	SURVEY BENCHMARK
9	MITIGATION PLANS
10	SITE PLAN
11	BERMING LAYOUT
12	GRADING LAYOUT
13	HORIZONTAL ALIGNMENT DATA
14	ACCESS ROAD PLAN AND PROFILE
15	CROSS SECTIONS
16	
17	
18	
19	
20	
21	
22	DRAINAGE
23	DRAINAGE AREA MAP
24	DRAINAGE LATERALS
25	
26	
27	DRAINAGE STANDARDS
28	PB
29	PDD
30	PAZD
31	
32	ELECTRICAL
33	LEGENDS AND ABBREVIATIONS
34	ELECTRICAL LINE DIAGRAM AND DETAILS
35	ELECTRICAL WELL PUMP SITE PLAN
36	ELECTRICAL ENLARGED WELL PUMP SITE PLAN
37	
38	MISCELLANEOUS
39	WELL SITE DETAILS
40	
41	SOILS
42	SOIL MANAGEMENT PLAN
43	
44	SW3P
45	SW3P SHEETS
46	
47	SW3P STANDARDS
48	EC (1) - 16
49	EC (2) - 16
50	EC (3) - 16
51	EC (4) - 16
52	EC (5) - 16

HIDALGO COUNTY REGIONAL MOBILITY AUTHORITY

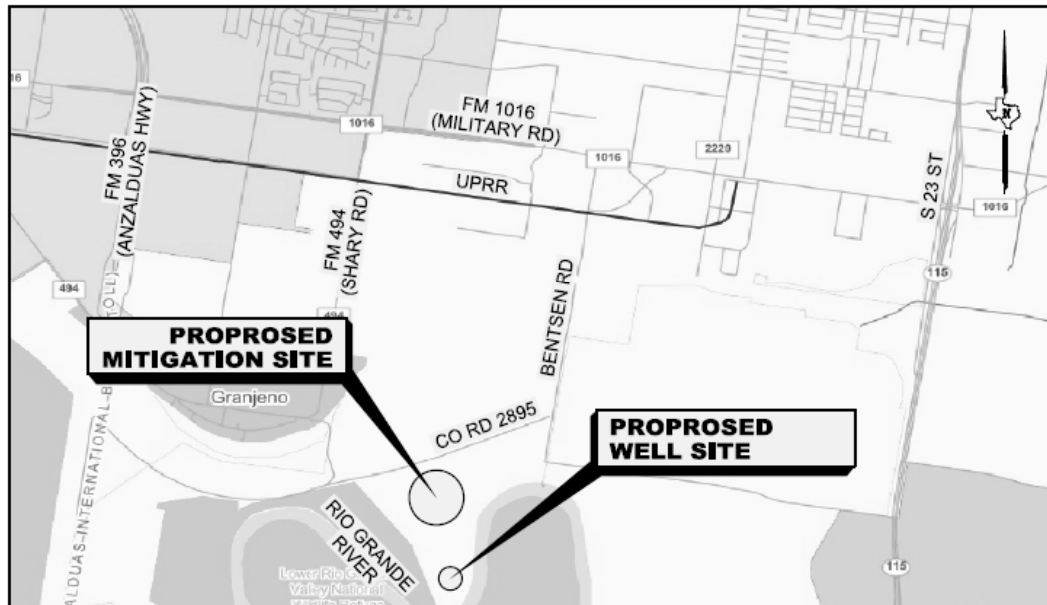
PLANS OF PROPOSED WETLAND MITIGATION SITE

CONSTRUCTION OF

A WETLAND MITIGATION SITE CONSISTING OF 26.51 ACRES OF LAND INCLUDING 23.89 ACRES PLANNED SPECIFICALLY OF WETLAND RESTORATION. IMPROVEMENTS INCLUDE DE-COMPACTION OF SOILS, REGRADING, DRAINAGE STRUCTURES, IRRIGATION STRUCTURES, CULVERT STRUCTURES, AND INSTALLATION OF SPECIFIED VEGETATION.



DCIT	COUNTY	SHEET NO.
PHR	HIDALGO	1



FINAL PLAN DATA :

FINAL CONTRACT PRICE: _____
 CONTRACTORS NAME: _____
 CONTRACTORS ADDRESS: _____
 LETTING DATE: _____
 DATE WORK BEGAN: _____
 DATE WORK COMPLETED: _____
 DATE OF ACCEPTANCE: _____

CHANGE ORDERS & SUPP. AGREEMENTS :

ALL CONSTRUCTION WORK WAS PERFORMED IN ACCORDANCE WITH THE PLANS, SPECIFICATIONS AND CONTRACT. ALL PROPOSED CONSTRUCTION WAS COMPLETED UNLESS OTHERWISE NOTED.

DATE: 8/2/2022 10:09:37 AM

HCRMA GRANJENO WETLAND MITIGATION SITE
 COUNTY: HIDALGO
 PROJECT NO.: 2022-001
 DATE ACCEPTED: _____

APPROVED FOR LETTING : <input type="checkbox"/>	APPROVED FOR LETTING : <input type="checkbox"/>
HCRMA, CHAIRMAN	HCRMA, EXECUTIVE DIRECTOR
APPROVED FOR LETTING : <input type="checkbox"/>	APPROVED FOR LETTING : <input type="checkbox"/>
HCRMA, CHIEF CONSTRUCTION ENGINEER	HCRMA, CHIEF DEVELOPMENT ENGINEER
SUBMITTED FOR LETTING : <input type="checkbox"/>	
DANNENBAUM ENGINEERING, PROGRAM MANAGER	



HCRMA

HIDALGO COUNTY REGIONAL MOBILITY AUTHORITY



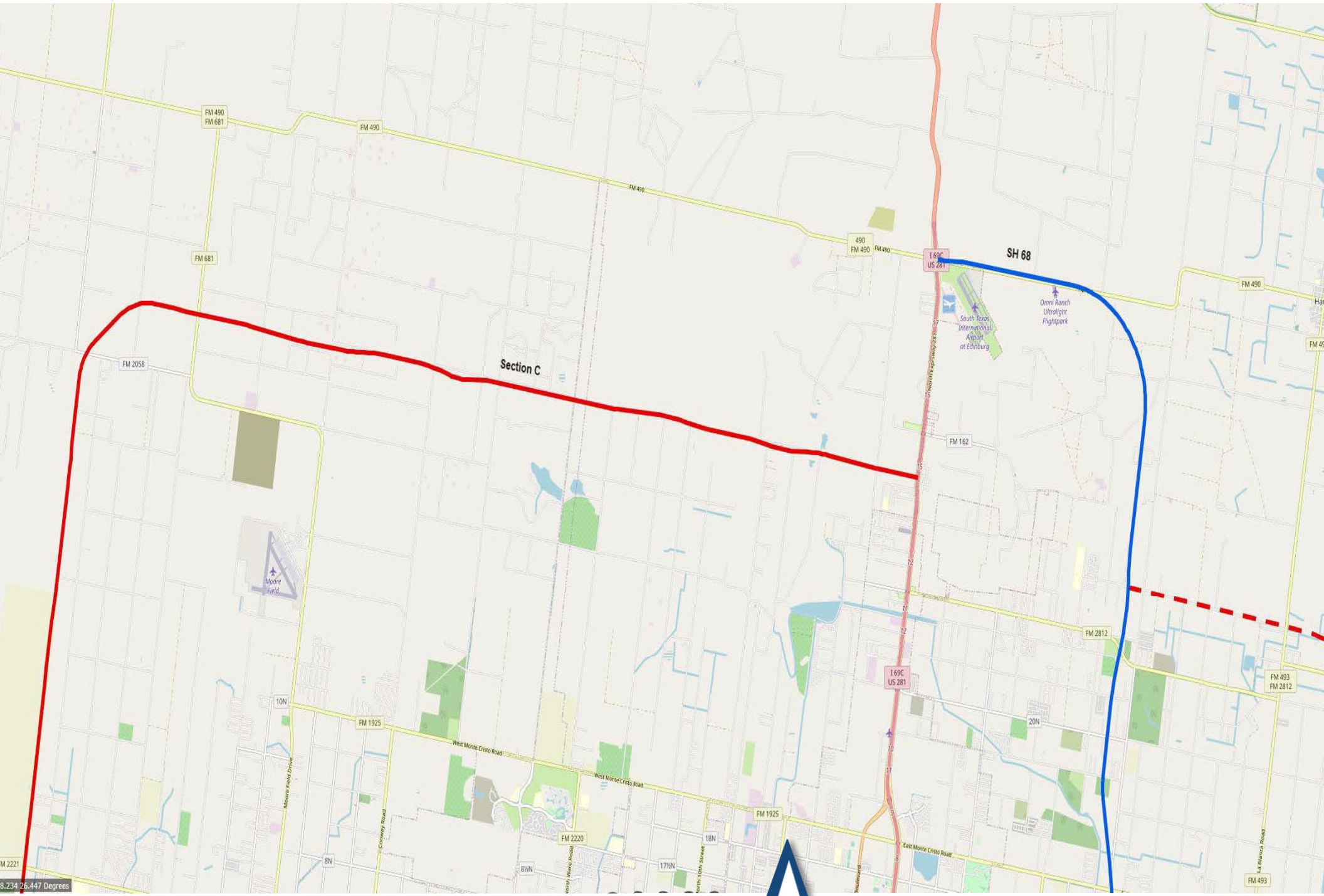
HDR
 Firm Registration No. F-754
 4828 Loop Central Drive, Suite 800
 Houston, Texas 77061-2220
 713.822.9264





REVISED
8:02 am, Sep 18, 2020





M 2221
6.234 26.447 Degrees



Section C Project Summary

- Project Description: Construct 4 lane controlled access tolled highway.
 - Length (Mi.): 29.85 from Schematic
 - ROW (Ac.): 1176 - 75% 300-ft / 25% 400-ft Road Width
 - Project Limits
 - From: I-2, 0.8 Mi W of Showers Rd
 - To: I-69C, 0.6 Mi. S. of FM 162

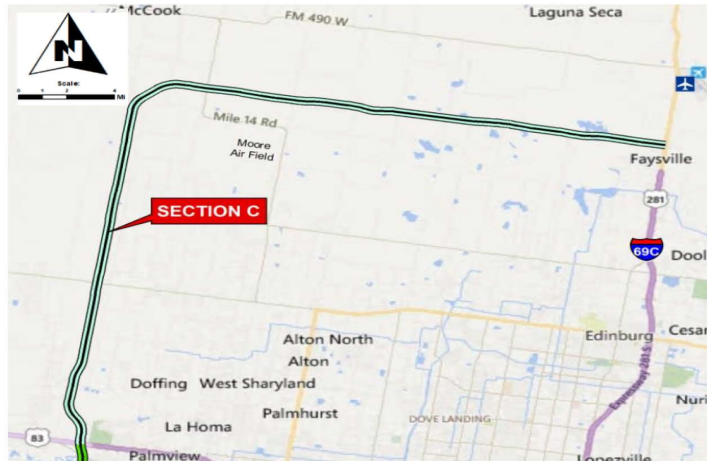
Key Assumptions

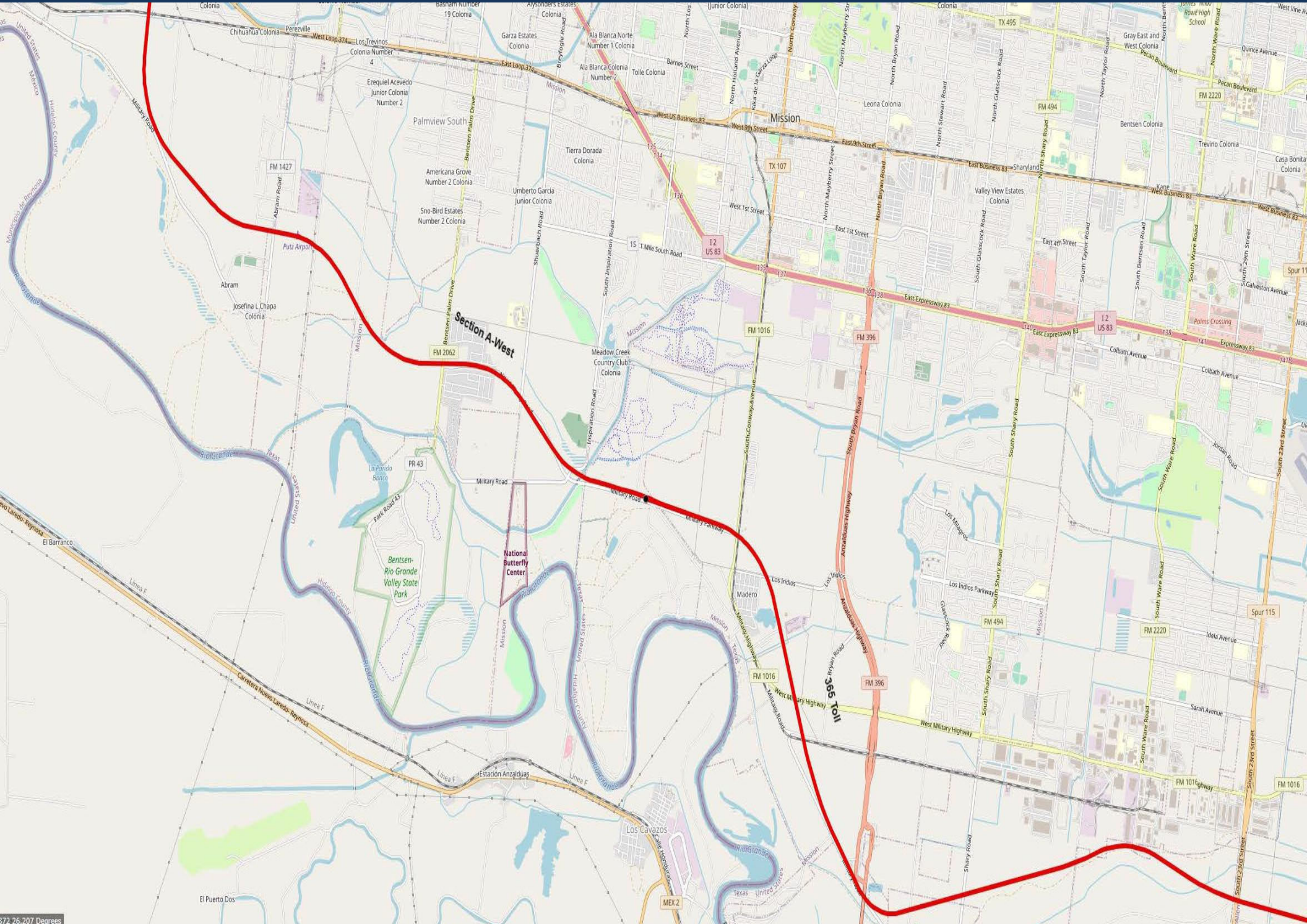
- Independent Env. Document (EIS), Overweight Pavement Design, Toll Collection System, and Partially Compensable Utilities.

Project Cost Overview

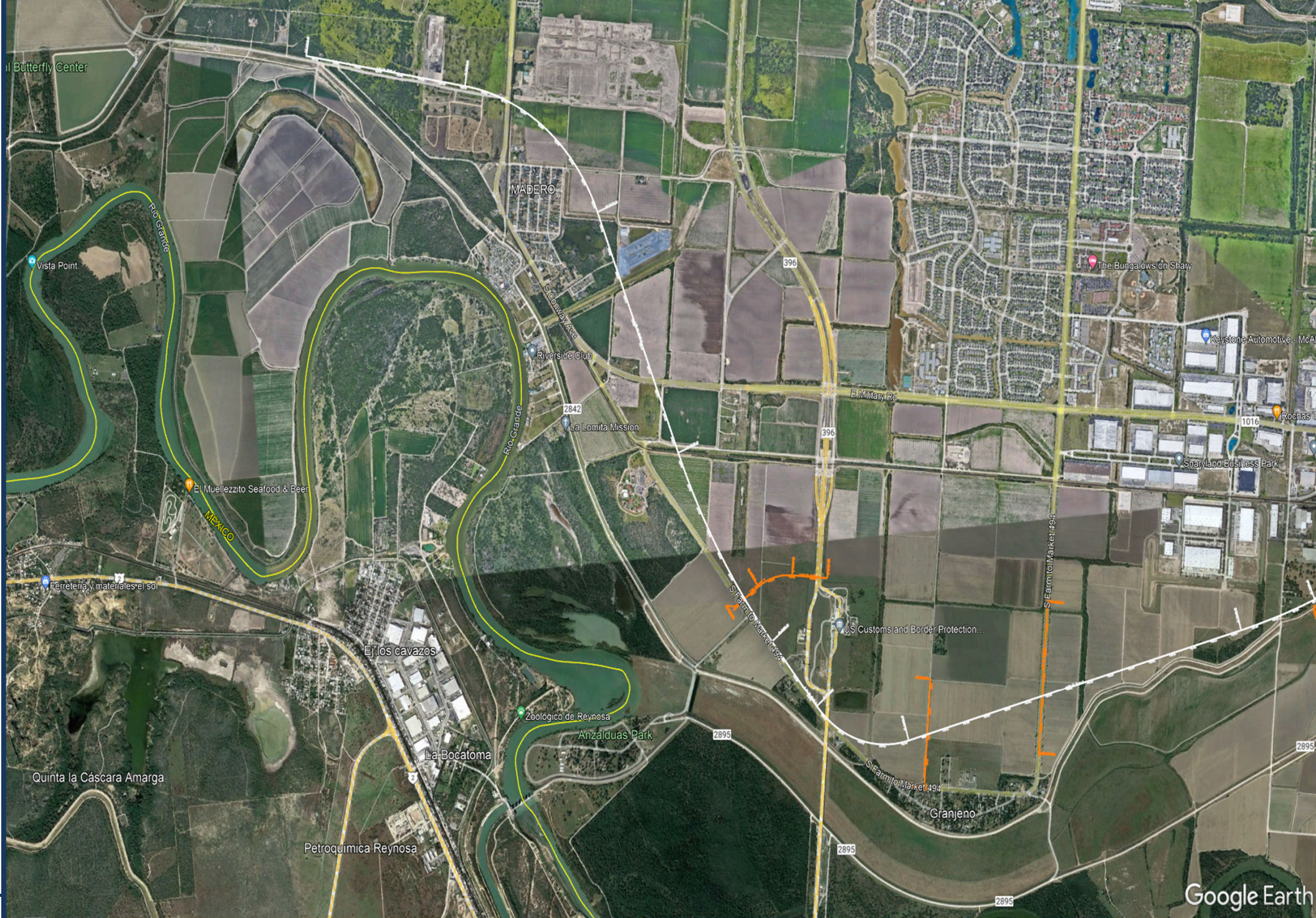
Total Development Cost: \$1,113,452,600 in 2023 Dollars

- **Mgt. Support: \$10,813,200** - 1.5% of CC: GEC Oversight
- **Prelim. Engr.: \$39,648,400** - 5.5% of CC: Environmental (EIS), Schematic, Low Level Flight, Surveys
- **Final Design: \$50,461,600** - 7.0% of CC: PS&E, Geotech, Pavement Design, SUE, Topo
- **ROW Acq.: \$152,880,000** - \$130,000/AC for ROW Services, Title Services, Land Acquisition
- **Utility Relo.: \$57,670,400** - 8.0% of CC for Utility Relocations / Drainage
- **Toll Collect. Sys.: \$41,450,600** - 5.75% of CC: 5% for TSI + TCS Des. + 0.75% T&R
- **Construction: \$720,880,000** - \$23MM/Mi. (Approx.) for CRCP 2+2 Facility + 5% Contingency
- **Constr. Mgt.: \$39,648,400** - 5.5% of CC: CEI & CMT





372.26.207 Degrees



Google Earth



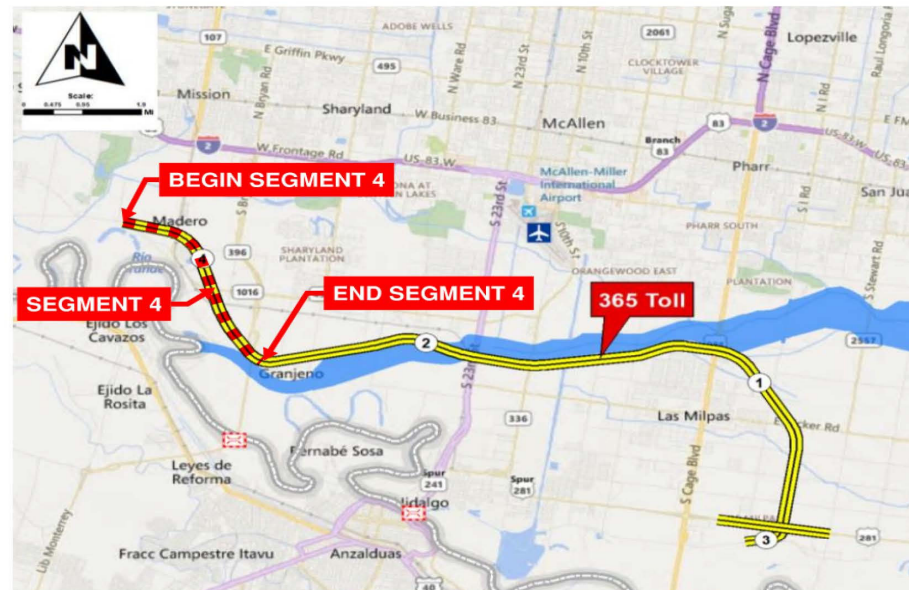
365 Tollway Segment 4 Project Summary

- Project Description: Construct 4 lane controlled access tolled highway.
 - Length (Mi.): 2.65 from Schematic
 - ROW (Ac.): 104 - 75% 300-ft / 25% 400-ft Road Width
 - Project Limits
 - From: FM 1016 / Conway Ave
 - To: FM 396 / Anzalduas Hwy

Project Cost Overview

Total Development Cost: \$96,400,000 in 2023 Dollars

- **Mgt. Support: \$960,000** - 1.5% of CC: GEC Oversight
- **Prelim. Engr.: \$1,120,000** - 1.75% of CC: Environmental Re-evaluation (EA), Low Level Flight, Surveys
- **Final Design: 4,480,000** - 7.0% of CC: PS&E, Geotech, Pavement Design, SUE, Topo
- **ROW Acq.: \$13,520,000** - \$130,000/AC for ROW Services, Title Services, Land Acquisition
- **Utility Relo.: \$5,120,000** - 8.0% of CC for Utility Relocations / Drainage
- **Toll Collect. Sys.: \$3,680,000** - 5.75% of CC: 5% for TSI + TCS Des. + 0.75% T&R
- **Construction: \$64,000,000** - \$23MM/Mi. (Approx.) for CRCP 2+2 Facility + 5% Contingency
- **Constr. Mgt.: \$3,520,000** -5.5% of CC: CEI & CMT



Section A (West) Project Summary

- Project Description: Construct 4 lane controlled access tolled highway.
 - Length (Mi.): 8.26 from Schematic
 - ROW (Ac.): 325 - 75% 300-ft / 25% 400-ft Road Width
 - Project Limits
 - From: I-2, 0.8 Mi W of Showers Rd
 - To: FM 1016 / Conway Ave

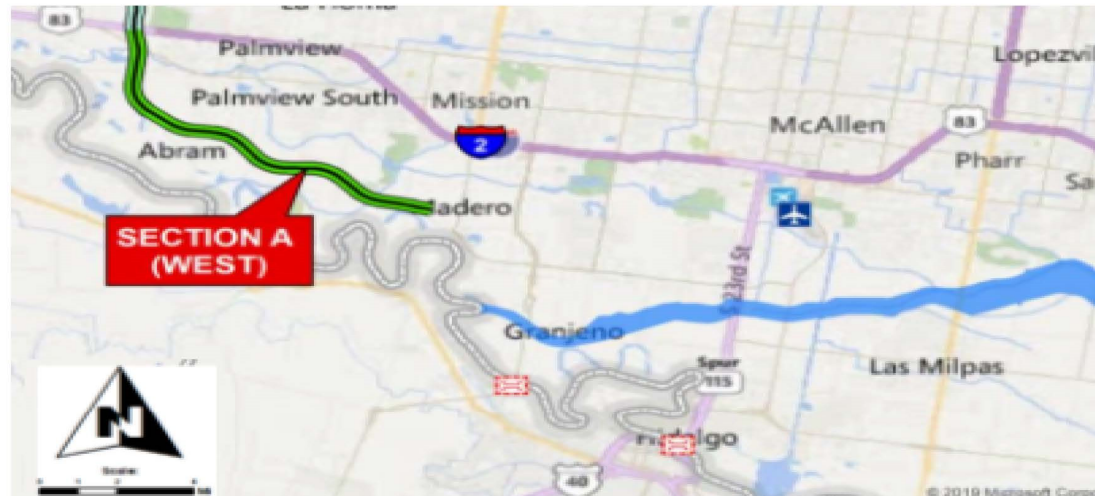
Key Assumptions

- Independent Env. Document (EIS), Overweight Pavement Design, Toll Collection System, and Partially Compensable Utilities.

Project Cost Overview

Total Development Cost: \$308,057,100 in 2023 Dollars

- **Mgt. Support: \$2,992,200** - 1.5% of CC: GEC Oversight
- **Prelim. Engr.: \$10,971,400** - 5.5% of CC: Environmental (EIS), Schematic, Low Level Flight, Surveys
- **Final Design: \$13,963,600** - 7.0% of CC: PS&E, Geotech, Pavement Design, SUE, Topo
- **ROW Acq.: \$42,250,000** - \$130,000/AC for ROW Services, Title Services, Land Acquisition
- **Utility Relo.: \$15,958,400** - 8.0% of CC for Utility Relocations / Drainage
- **Toll Collect. Sys.: \$11,470,100** - 5.75% of CC: 5% for TSI + TCS Des. + 0.75% T&R
- **Construction: \$199,480,000** - \$23MM/Mi. (Approx.) for CRCP 2+2 Facility + 5% Contingency
- **Constr. Mgt.: \$10,971,400** - 5.5% of CC: CEI & CMT



Thursday, September 14, 2023

Lenguaje ▼

Specialized Overweight Permits

Hidalgo County allows shippers to securely order specialized overweight permits online. The permits cover travel over the Hidalgo County roads listed below for vehicles weighing no more than the Mexican Legal Weight Limit or 125,000 lbs. For a more detailed explanation, see below.

Permit Information

The Hidalgo County Regional Mobility Authority (HCRMA) administers the overweight permit corridor system for the Hidalgo County. Overweight permits issued through the HCRMA are only valid for destinations originating from the following points of entry:

- Anzalduas Bridge
- Pharr-Reynosa Bridge
- Donna-Rio Bravo Bridge
- Progreso Bridge

Or for movement on the following roads:

- (1) U.S. Highway 281 between its intersection with Pharr-Reynosa International Bridge and its intersection with State Highway 336.
- (2) State Highway 336 between its intersection with U.S. Highway 281 and its intersection with Farm-to-Market Road 1016.
- (3) Farm-to-Market Road 1016 between its intersection with State Highway 336 and its intersection with Trinity Road.
- (4) Trinity Road between its intersection with Farm-to-Market Road 1016 and its intersection with Farm-to-Market Road 396.
- (5) Farm-to-Market Road 396 between its intersection with Trinity Road and its intersection with the Anzalduas International Bridge.
- (6) Farm-to-Market Road 2061 between its intersection with Farm-to-Market Road 3072 and its intersection with U.S. Highway 281.
- (7) U.S. Highway 281 between its intersection with the Pharr-Reynosa International Bridge and its intersection with Spur 29.
- (8) Spur 29 between its intersection with U.S. Highway 281 and its intersection with Doffin Canal Road.
- (9) Doffin Canal Road between its intersection with the Pharr-Reynosa International Bridge and its intersection with Spur 29.
- (10) FM 2557 (Stewart Road) from US 281/Military Highway to Interstate 2 (US 83).
- (11) FM 3072 (Dicker Road) from Veterans Boulevard ('I' Road) to Cesar Chavez Road.
- (12) Route 12: US 281 (Cage Boulevard) from US 281/Military Highway to Anaya Road.
- (13) US 281/Military Highway from Spur 29 to FM 1015.
- (14) Farm to Market 1015 - Progreso International Bridge to Mile 9 North.
- (15) US 83 Business - Farm to Market 1015 to South Bridge Avenue.

17

The gross weight of cargo and equipment shall not exceed the allowable permissible axle load, the Mexican Legal Weight Limit or 125,000 lbs, whichever is less, and the dimensions of the load and vehicle shall not exceed 12' wide, 15'6" high, or 110' long.

OVERWEIGHT / OVERSIZE CORRIDOR SEGMENTS

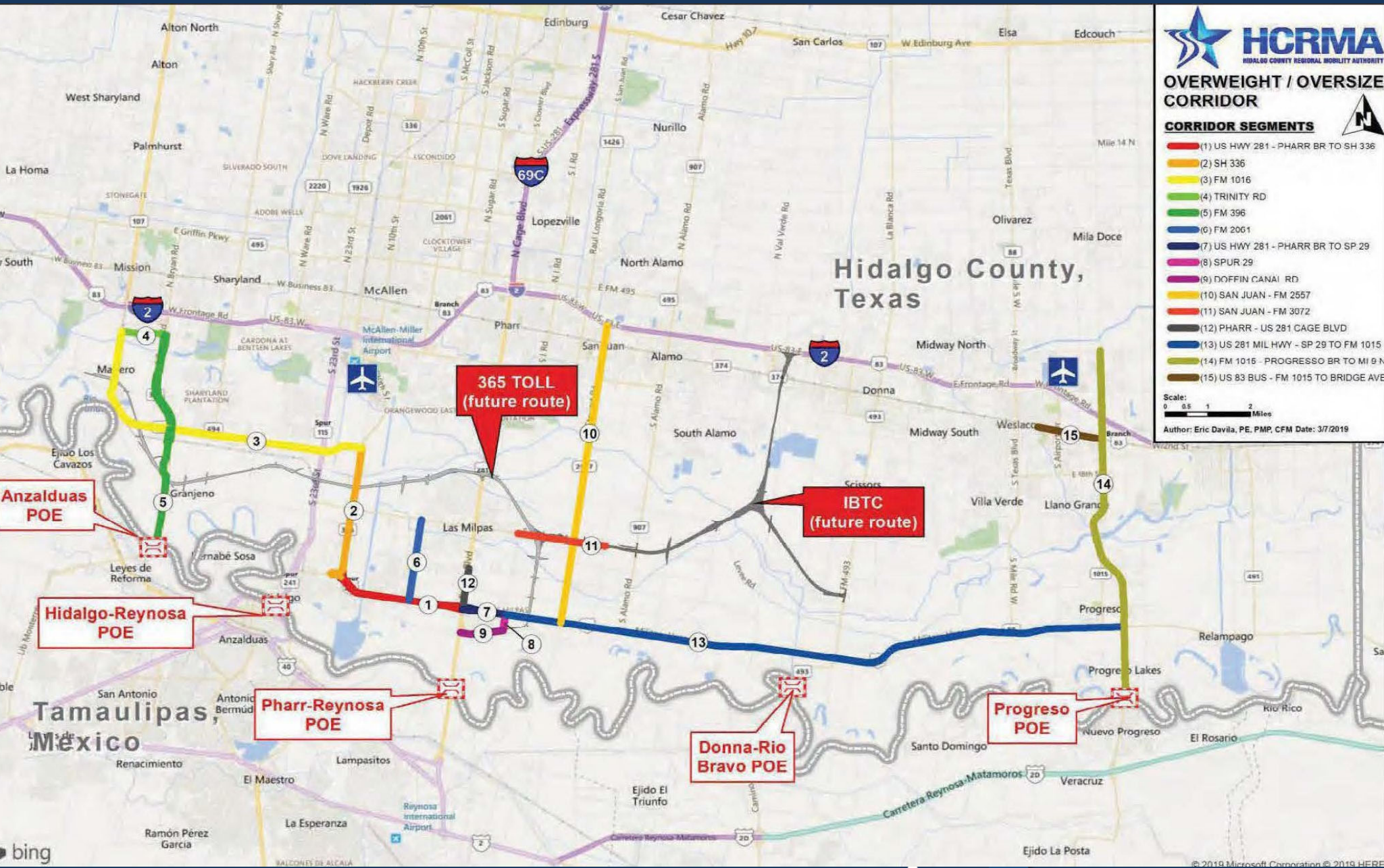


OVERWEIGHT / OVERSIZE CORRIDOR

CORRIDOR SEGMENTS

- (1) US HWY 281 - PHARR BR TO SH 336
- (2) SH 336
- (3) FM 1016
- (4) TRINITY RD
- (5) FM 396
- (6) FM 2061
- (7) US HWY 281 - PHARR BR TO SP 29
- (8) SPUR 29
- (9) DOFFIN CANAL RD
- (10) SAN JUAN - FM 2557
- (11) SAN JUAN - FM 3072
- (12) PHARR - US 281 CAGE BLVD
- (13) US 281 MIL HWY - SP 29 TO FM 1015
- (14) FM 1015 - PROGRESSO BR TO MI 9 N
- (15) US 83 BUS - FM 1015 TO BRIDGE AVE

Scale: 0 0.5 1 2 Miles
 Author: Eric Davila, PE, PMP, CFM Date: 3/7/2019



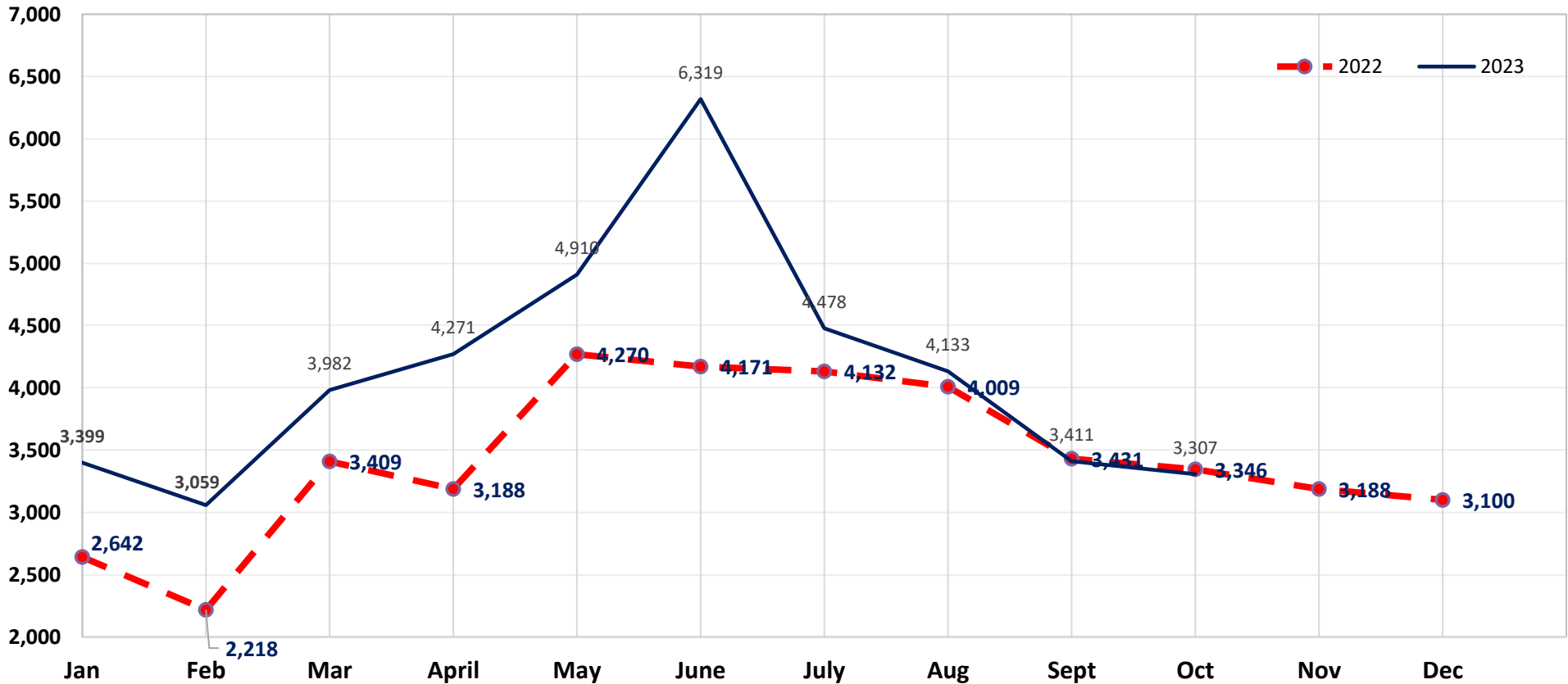
▶ OVERWEIGHT REPORT FOR OCTOBER 2023:

January 1, 2023- October 31, 2023

Total Permits Issued:	41,267
Total Amount Collected:	\$8,425,882
■ Convenience Fees:	\$172,482
■ Total Permit Fees:	\$8,253,400
-Pro Miles:	\$ 123,801
-TxDOT:	\$7,015,390
-HCRMA	\$1,114,209

JANUARY 1, 2023 – OCTOBER 31, 2023

Overweight/Oversized Permit Count 2022 - 2023 Monthly Comparison



NOTES:

1. The accumulated permit count for 2023 (41,269) in comparison to 2022 (34,816):2021 (34,196).
2. Monthly permit count of 3,307 represents a -1.17% (decrease, 39) compared to the same month in 2022 (3,346).